

Check valve

IA 202X

PN 10

DN 350 - 800

DESCRIPTION

Spring loaded swing check valve in stainless steel for installation between flanges PN 10/25/ANSI 150.

Metal sealing check valve with extremely free flow area and a balanced disc that gives a very low pressure loss and the metal seat has a very good tightness. Face to face length not standard.

Range of application includes water, steam, gases and other non-destructive media.

ASSEMBLY

The valve should be installed in a horizontal pipe with the shaft in a vertical position and the lifting lug facing upwards.

Use a spirit-level to balance the valve in an upright position parallel to the shaft.

TECHNICAL DATA

Leakage rate B according to EN12266-1 and ISO 5208.

Max working pressure from -50° to 40°C:

DN 350-400	max. 25 bar
DN 450	max 16 bar
DN 500-800	max 10 bar

Temperature range: -50°C – +300°C

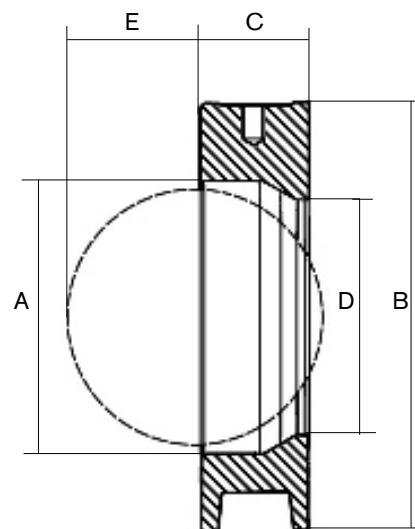
For pressure loss calculation, use the following values. Also see pressure loss diagram for water on the following page.

DN	350	400	450	500	600	700	800
Kvs	6900	9000	11150	14250	20500	25000	35000

For pressure loss with other media, consult IA.

DIMENSIONS

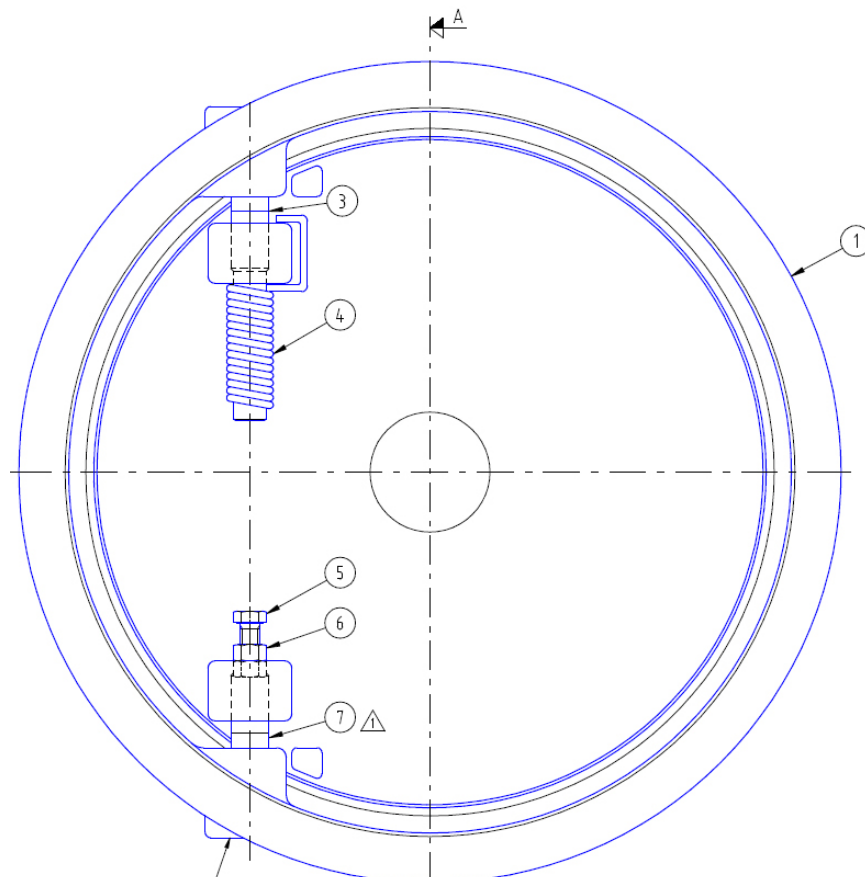
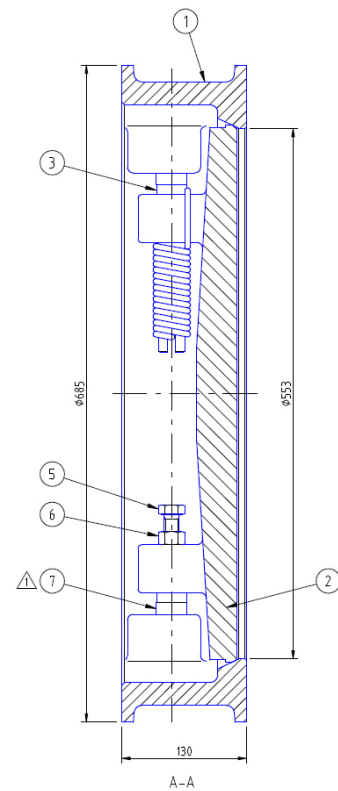
DN	350	400	450	500	600	700	800
Ø A	352	402	452	502	602	702	802
Ø B	438	490	535	585	685	800	905
C	90	100	110	120	130	140	160
Ø D	308	360	408	457	553	650	750
E	191	226	256	290	350	430	485
Weight [kg]	43	56	70	82	138	198	275



IA 202X

MATERIAL

Nr.	DETALJ	MATERIAL
1	Body	ASTM A 351 CF8M
2	Disc	UNS S 32900
3	Shaft	ASTM A 182 F316
4	Spring	ASTM A 182 F316
5	Bolt	ASTM A 193 Gr B8M (stellite coated end)
6	Nut	ASTM A 194 Gr 8M (welded to disc)
7	Shaft	ASTM A 182 F316 (stellite coated end)
	Seat	ASTM A 182 F316



PRESSURE LOSS DIAGRAM (WATER)

